

# GAME 5 – CHICKEN TRACKING

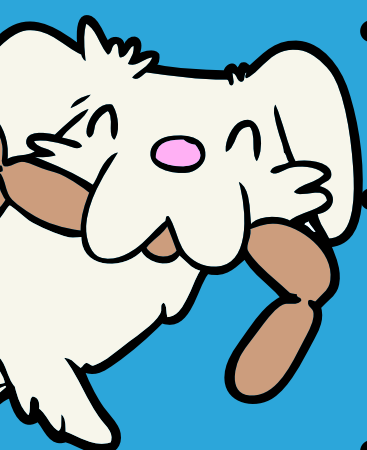


Chicken Tracking is your dog using its nose to follow a track being left by a piece of sausage along the ground.

You can use anything – Ham, sausage, a meaty stick – anything your dog likes that you can tie a piece of string to and drag along the ground without it disintegrating!

How to play the game:

- Decide and map out where you are going to lay the track. Your lawn is a good place to start
- Place a marker at your start point (for your reference) and leave a tiny piece of the chicken there
- Drag the chicken along the ground gently, for around 5-10 paces (you don't need to smear bits everywhere)
- Lay it in more or less a straight line. (Gentle curves are OK but no sharp corners at this stage, please.)
- Leave the rest of the chicken at the end
- Take your dog on a long lead (or two leads linked together – but no extending leads please!) to the start of the track
- point to the ground by the start point and ask your dog to “Track on”
- Your dog will eat the first bit of food, then he'll follow the track you laid. Let your dog follow his nose along the track
- If they lose the scent at any point, help them by pointing to the ground, but try not to interfere with the dog scenting otherwise
- Celebrate with your dog when they reach the end and can chomp the chicken!



**#NOSENERDS**